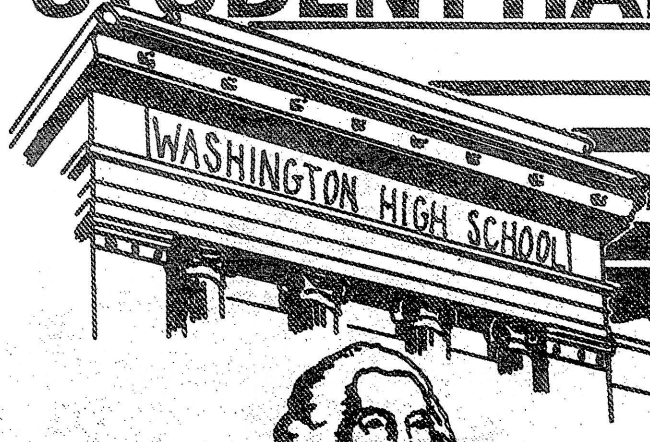


# STUDENT HANDBOOK AND CALENDAR

## 1974-75

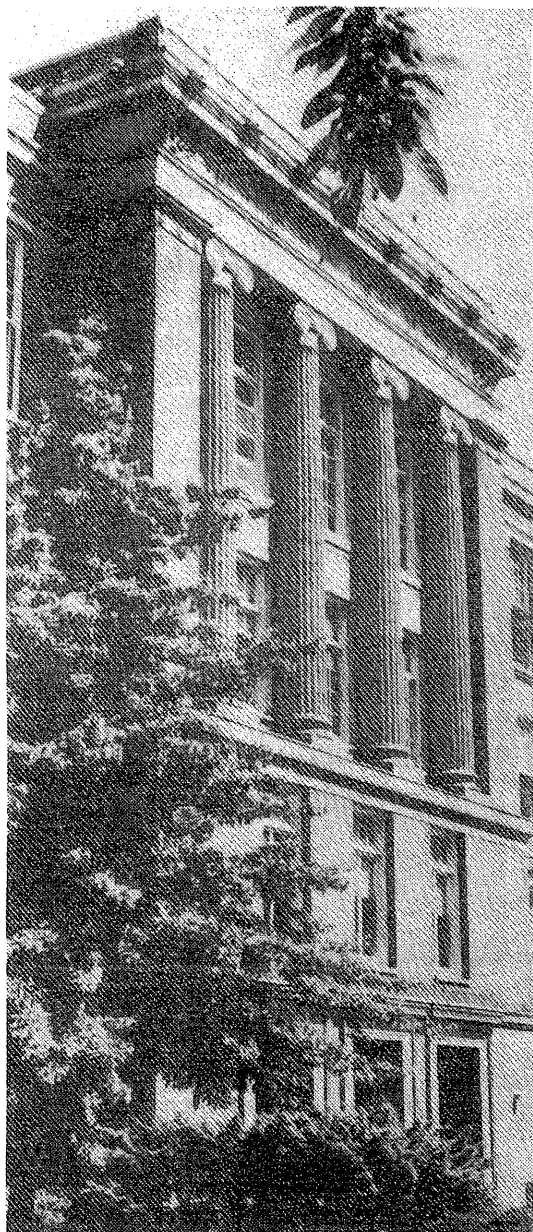


Washington High School, acknowledging that each student is important in his own right, is dedicated to the attainment of the following goals:

1. Students will realize their self-importance.
2. Students and staff will recognize that each person has human dignity and worth.
3. Students and staff will exercise mutual respect.
4. The entire staff will meet the individual needs of each student.
5. Students will develop and use skills and knowledge to the best of their ability.
6. Students will make decisions that reflect increasing maturity.
7. Students will become acquainted with the world of work through a carefully planned career education program.



# WA-HI ADMINISTRATION

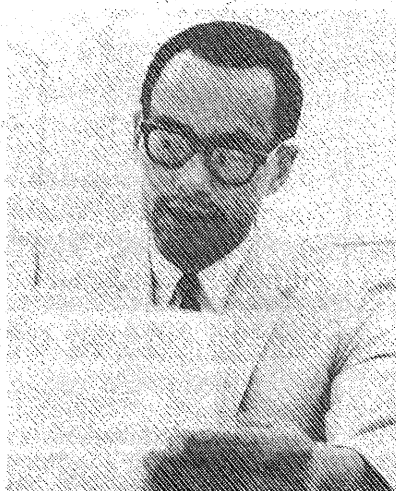


The responsibility for directing Washington's curriculum, activities, and upholding the policy of the Portland Public Schools rests primarily with Wa-Hi's four administrators.

At the head is Washington's Principal, Mr. William R. Gray. Mr. Nate Jones is the Administrative Vice Principal, and Ms. Mary Withycombe is Washington's Dean of Girls. Mr. Nathan Berkham presently holds the position of Acting Curriculum Vice Principal.



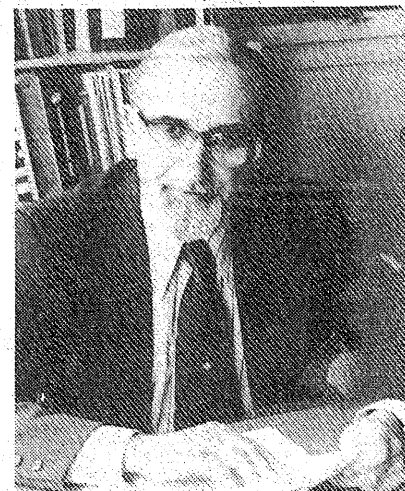
WILLIAM R. GRAY



NATE JONES



MARY WITHYCOMBE



NATHAN BERKHAM

SUN.	MONDAY	TUESDAY	WEDNESDAY	THURSDAY	FRIDAY	SAT.
<b>1</b>	<b>2</b> Holiday	<b>3</b>	<b>4</b> Teachers Report to Schools	<b>5</b>	<b>6</b>	<b>7</b>
<b>8</b>	<b>9</b> Freshmen Orientation 9:00-11:00 a.m. First Day of School Start of First Grading Period	<b>10</b>	<b>11</b> I.D. Photos	<b>12</b> Lab book \$2.00 S.S.	<b>13</b> Football Washington vs Franklin at Franklin 8:00 p.m.	<b>14</b>
<b>15</b>	<b>16</b>	<b>17</b>	<b>18</b>	<b>19</b> Football—JV Wash. at Franklin 8:00 p.m.	<b>20</b> Football Wash. vs Madi- son at Madison 8:00 p.m.	<b>21</b>
<b>22</b>	<b>23</b>	<b>24</b>	<b>25</b>	<b>26</b> Football— JV Wa-Hi at Jackson 4:00 p.m. Frosh-Jackson at Wa-Hi	<b>27</b> Football Washington vs Roosevelt at Stadium 6:30 p.m. Homecoming Dance 8:30 p.m.	<b>28</b>
<b>29</b>	<b>30</b>	<b>SEPTEMBER</b>				



# STUDENT GOVERNMENT

Washington's student government fills an important role in the high school, both as a leadership development program and as an effective student lobby. It consists of the Executive Council, the General Council, the Cabinet, and the class councils from each of the four classes.

All legislative powers of the Associated Students of Washington High School are held by the Executive Council but are subject to the approval of the principal. New officers for the positions of president elect, vice president, secretary, assistant treasurer, and assistant publicity manager will be elected on January 17 for the spring term and May 23 for the following year.

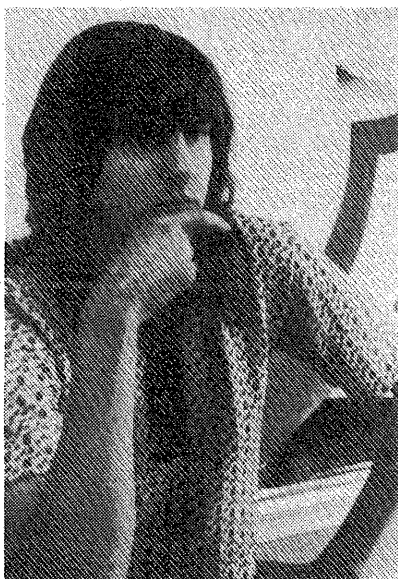
The General Council is headed by the student body president-elect and consists of representatives from each each reg class. Its purpose is to carry out committee work and maintain communication between the Executive Council and the student body.

The presidents of all chartered clubs and the vice president of the Executive Council compose the Cabinet. The Cabinet acquaints the clubs with the regulations governing high school organizations and coordinates club activities.

Class Councils hold the power and responsibilities of organizing class activities including the traditional dances. Class officers serve full year terms.



VICKY STRANG



JOHN MAYHEW

## FALL EXECUTIVE COUNCIL OFFICERS:

President ..... Vicky Strang  
 President-Elect ..... John Mayhew  
 Vice President ..... Gordon Schaffer  
 Secretary ..... Dori Long  
 Treasurer ..... Pattie Landre  
 Assistant Treasurer ..... Ellenore Perry  
 Publicity Manager ..... Richard Staehli  
 Assistant Publicity Manager ..... Raymond Lee

## SENIOR CLASS OFFICERS:

President ..... Ken Brown  
 Vice President ..... Alicia Hendrickson  
 Secretary ..... Jeanette Nave  
 Treasurer ..... Cammie Brim  
 Sergeant at Arms ..... Linda Atlas  
 Editor-Historian ..... Geneal Toms  
 Publicity Manager ..... Tamas Constant

## JUNIOR CLASS OFFICERS:

President ..... Sue Cogan  
 Vice President ..... LaVonne Williams  
 Secretary ..... Lynn Weigand  
 Treasurer ..... Martha Waymire  
 Editor-Historian ..... Stephan Schuurmans  
 Publicity Manager ..... Mary Kelly

## SOPHOMORE CLASS OFFICERS:

President ..... John Rumpakis  
 Vice President ..... Lisa Eckley  
 Secretary ..... Allison Penwarden  
 Treasurer ..... Paula Luft

## FRESHMAN CLASS OFFICERS: (to be elected)

President  
 Vice President  
 Secretary  
 Treasurer  
 Editor-Historian  
 Publicity Manager

SUN.	MONDAY	TUESDAY	WEDNESDAY	THURSDAY	FRIDAY	SAT.
<b>OCTOBER</b>		<b>1</b>	<b>2</b>	<b>3</b> Football—JV Wa-Hi at Roosevelt 4:00 p.m. Frosh-Roosevelt at Wa-Hi	<b>4</b>	<b>5</b> Football Wash. vs Wilson at Wilson 1:30 p.m.
<b>6</b>	<b>7</b>	<b>8</b>	<b>9</b> Football—JV Wa-Hi at Wilson 4:00 p.m. Frosh-Wilson at Wa-Hi	<b>10</b>	<b>11</b> Professional day for teachers No school Football-Wash. vs Adams at Franklin	<b>12</b>
<b>13</b>	<b>14</b>	<b>15</b> TAP and SCAT Test	<b>16</b> TAP and SCAT Test	<b>17</b> Football—JV Wa-Hi at Adams 4:00 p.m. Frosh-Adams at Wa-Hi	<b>18</b> Football Wash. vs Benson at Stadium 8:30 p.m.	<b>19</b>
<b>20</b>	<b>21</b>	<b>22</b>	<b>23</b>	<b>24</b> Football—JV Wa-Hi at Benson 4:00 p.m. Frosh-Benson at Wa-Hi Back to school	<b>25</b> Football Wa-Hi vs Lincoln at Lincoln 8:00 p.m.	<b>26</b> National Merit PSAT
<b>27</b>	<b>28</b>	<b>29</b>	<b>30</b>	<b>31</b> Football—JV Wa-Hi at Lincoln 4:00 p.m. Frosh-Lincoln at Wa-Hi		

# Washington's Administrative Policy

Taken from the Student Rights and Responsibilities Handbook

### Standard of Conduct

The Board of Education seeks to assure a climate in the schools which is appropriate for institutions of learning and which assures the safety and welfare of personnel and students. A student whose presence is seriously detrimental to the best interests of the school may be suspended or expelled in accordance with administrative rules and procedures established by the Superintendent. A suspension is merely a device to bring the parent, student, and teacher together to attempt to solve a student problem. Failure to comply with rules for the government of the school, pursue the prescribed course of study, or submit to the teacher's authority are grounds for suspension or expulsion.

### Freedom of Expression on School Grounds

Freedom of expression is a constitutional right. It is guaranteed in the schools within a context which recognizes other basic rights of the individual student, including the right to pursue one's education without disruption.

The exercise of freedom of expression shall include the right to distribute, receive, and wear buttons, armbands and other badges of symbolic expression. Bearing the responsibility of these rights, however, the students shall not distribute or display

materials which are libelous, obscene, or which create an immediate danger or physical disruption of the orderly operation of the school. Furthermore, students shall not distribute or display materials of a commercial nature, and students shall obtain the authorization of school authorities prior to engaging in activities which solicit student financial contributions.

### Student Participation in School Affairs

The Board of Education views student participation in school affairs as an extension of the educational process. This district will encourage students to participate through planned programs and procedures in the government of the school and in curriculum evaluation. Students have a right to opportunities for meaningful participation in school affairs, especially in the following ways:

1. Organized arrangements for communications between faculty, student, and administrators to discuss substantive school issues on a regular basis;
2. Student government so organized as to provide constructive participation of students in school matters;
3. Cooperative establishment of an editorial policy for the school newspaper;
4. Student involvement in the evaluation

and modification of school rules and a mechanism for the hearing of student grievances;

5. Student participation in curriculum evaluation and instructional planning on a regular basis.

### Student Clubs

All clubs shall operate according to democratic procedures and shall not discriminate on the basis of race, sex, religion, or national origin. Clubs which function within the school must be chartered by the Executive Council, be approved by the principal, and be supervised by an adult supervisor. The clubs shall be either service, honorary, or special interest clubs, meaning respectively that the club provides a service to the school or community, grants membership to students on the basis of special achievement, or provides experiences supplementary to educational programs.

Clubs which are intended to promote any one religion shall not be chartered. Membership in any interest or service club shall be open to all students. Members may not be selected by vote of the membership.

For a complete statement of the Portland Public Schools policy please read the publication "Student Rights and Responsibilities."

SUN.	MONDAY	TUESDAY	WEDNESDAY	THURSDAY	FRIDAY	SAT.
NOVEMBER					1 Football Wa-Hi vs Jeff. at Stadium 6:30 p.m.	2
3	4	5	6 Football — JV Wa-Hi at Jeffer- son at Wa-Hi Frosh-Jefferson at Wa-Hi	7 Scheduling for 2nd Grading Period	8	9
10	11 Holiday Veterans Day No School	12	13	14	15 End of First Grading Period Football Quarter Finals	16
17	18 Start of Second Grading Period	19	20	21 Fall Play Matinee	22 Football Semifinals Fall Play 8:00 p.m.	23 Fall Play 8:00 p.m.
24	25	26 Fall Concert 7:30 p.m.	27	28 Thanksgiving Day No School	29 Holiday Football — State Champion- ship Game	30

# Attendance Policy, Graduation Requirements

No student will be allowed to return to class after an absence without an admit slip. Students will fill out their own admit slips, giving the date, time, and reason for their absence. After three slips have been accumulated, copies will be sent home to the parent or guardian.

Three unexcused tardies will be

~~~~~

For sophomores, juniors, and seniors, the Portland Public Schools require four years attendance with 19 units of credit.

### 9 REQUIRED UNITS

- 3 units ENGLISH (must be enrolled four years)
- 2 units SOCIAL STUDIES after the freshman year (SS5-6 and SS7-8 credits must come from approved mini course sequence)
- 1 unit MATHEMATICS
- 1½ units PHYSICAL EDUCATION\*
- ½ unit HEALTH
- 1 unit SCIENCE

### 10 ELECTIVE UNITS

### 19 TOTAL UNITS

AT LEAST FOURTEEN UNITS MUST BE EARNED AFTER THE NINTH GRADE.

\*If excused from P.E. classes, the total requirement is still 19 units for graduation.

8

counted as one absence from class. The office will not issue tardy slips unless the student arrives after the reg period, in which case he must sign in at the office to clear his name from the Absentee List. All other tardies will be handled by the classroom teacher.

Attendance referral forms will be sent home when there is an attendance probem, but no later than the fifth absence. **Students who have accumulated more than 10 days absence in a nine-week course, 20**

~~~~~

For entering freshmen, the Portland Public Schools require four years of attendance with 21 units of credit.

### 12 REQUIRED UNITS

- 3 units Communications Skills
- 1 unit Mathematics
- 2 units Social Studies (including freshman year).
- 1 unit Citizenship Education
- 1 unit Laboratory Science
- 1 unit Health
- 1 unit Physical Education
- 1 unit Personal Finance (may be covered in other subject areas).
- 1 unit Consumer Education (may be covered in other subject areas).

### 9 ELECTIVE UNITS

### 21 TOTAL UNITS

days absence from a semester course, and 40 days from a year-long course may be dropped from the course and given an "F" unless there are extenuating circumstances. In cases of truancy the administrator may take immediate action.

When a student has accumulated excessive absences, he may be withdrawn from class by the administrator upon referral from the class teacher. At this point in time a student, teacher, parent, counselor and administrator conference must be held.

**Students may appeal removal from class because of accidents, prolonged illnesses, or other causes of lengthy absenteeism.**

**Students who become ill during the day must not leave the building without being excused from the office.** No student is ever permitted to go home during the day without permission from the office and from home.

The 1974-75 Washington High School Handbook and Calendar was prepared for distribution to students, parents, and faculty by Richard Staehli, Winter Editor of **The Washingtonian**; John Mayhew, Student Body President-Elect; Mr. Don Spiering, Activities Director, and Mr. Jim Maloney, English teacher and newspaper adviser.

SUN.	MONDAY	TUESDAY	WEDNESDAY	THURSDAY	FRIDAY	SAT.
<b>1</b>	<b>2</b>	<b>3</b>	<b>4</b>	<b>5</b>	<b>6</b> Pacific Univ Speech Meet	<b>7</b> Pac. Univ. Speech Meet
<b>8</b>	<b>9</b>	<b>10</b>	<b>11</b>	<b>12</b>	<b>13</b> Basketball Washington-Bye	<b>14</b>
<b>15</b>	<b>16</b>	<b>17</b> Basketball Benson at Wa-Hi 3:45 p.m. Wrestling Wash. at Benson 7:00 p.m.	<b>18</b> Winter Concert 7:30 p.m.	<b>19</b> Basketball Girls—Jeff at Wa-Hi 7:15 p.m.	<b>20</b> Basketball Lincoln at Wa-Hi 8:00 p.m. Girls—Wa-Hi at Lincoln 7:15 p.m.	<b>21</b>
<b>22</b>	<b>23</b> Beginning of Winter Vacation	<b>24</b>	<b>25</b>	<b>26</b>	<b>27</b>	<b>28</b>
<b>29</b>	<b>30</b>	<b>31</b>	<b>DECEMBER</b>			



SUN.	MONDAY	TUESDAY	WEDNESDAY	THURSDAY	FRIDAY	SAT.
JANUARY			1	2	3 Basketball Wa-Hi vs Jackson at Coliseum.	4
5	6 Teachers return to school.	7 Students return to school. Basketball — Wa-Hi at Wilson.	8	9 Speech Fest Basketball Girls — Wa-Hi at Jackson 7:15 Wrestling, Roosevelt at Wa-Hi 7:00 p.m.	10 Basketball Roosevelt at Wa-Hi Girls — Wa-Hi at Roosevelt. U of P Speech Festival.	11 U of P Speech Festival.
12	13 Swimming, Wa-Hi vs Wilson 5:30 p.m. at L & C Col.	14 State College Visitation 10:30 a.m.; Wrestling Adams at Wa-Hi 7:00 p.m. Basketball Wa-Hi at Jeff.	15	16 Wrestling Jackson at Wa-Hi 7:00 p.m.	17 Student Body Elections. Basketball Wa-Hi at Madison Girls — Wa-Hi at Wilson.	18
19	20	21 Basketball Wa-Hi — Bye Wrestling Marshall at Wa-Hi 7:00 p.m.	22 Swimming Wa-Hi vs Benson at L & C Col. 5:30 p.m.	23 Scheduling for 3rd grading period. Basketball — Girls Monroe at Wa-Hi.	24 Basketball Franklin at Wa-Hi.	25
26	27 Swimming Wa-Hi vs Jeff L & C Col. 5:30 p.m.	28 Basketball Wa-Hi at Adams Wrestling Jefferson at Wa-Hi 7:00 p.m.	29 Swimming Wa-Hi vs. Roosevelt at L & C College 5:30 p.m.	30 Basketball Grant at Wa-Hi Wrestling Wa-Hi at Wilson 7:00 p.m.	31 End of second grading period. Basketball Grant at Wa-Hi. Basketball girls Wa-Hi at Monroe.	

SUN.	MONDAY	TUESDAY	WEDNESDAY	THURSDAY	FRIDAY	SAT.
FEBRUARY						1
2	3 Start of third grading period. Swimming — Wa-Hi vs Jackson at L & C College 5:30 p.m.	4 Basketball Jackson at Wa-Hi. Wrestling Wa-Hi at Grant.	5 Pops Concert 7:30 p.m.	6 Swim Semi-finals Basketball — Girls Wa-Hi at Jeff 7:15. Wrestling Wa-Hi at Lincoln 7:00	7 Basketball Wa-Hi — Bye Girls — Wilson at Wash.	8
9	10 Swimming — City championship at Multnomah Athletic Club.	11 Basketball — Wa-Hi at Benson; wrestling Wa-Hi at Madison 7:00 p.m.	12	13 Basketball Wilson at Wa-Hi. Wrestling cross division.	14 Basketball Wa-Hi at Lincoln. Girls — Lincoln at Wa-Hi.	15 Lane C. C. Swing Choir Festival.
16	17 Holiday Presidents Day — No School.	18	19 Basketball Jefferson at Wa-Hi.	20 Basketball Girls — Jeff at Wa-Hi 7:15 p.m. Wrestling sub district.	21 Basketball Wa-Hi at Roosevelt, Girls at Wa-Hi. Wrestling sub district.	22
23	24	25	26 Girls Cross Division Basketball 7:15 p.m.	27 Wrestling district meet at Madison.	28	

SUN.	MONDAY	TUESDAY	WEDNESDAY	THURSDAY	FRIDAY	SAT.
m a r c h						1
2	3	4	5 Winter play matinee.	6 Winter Play 8 p.m.	7 Winter play 8 p.m. Wrestling State tournament in Corvallis.	8 Play State Wrestling PSU Solo and ensemble contest
9	10	11 State BB Tourney PSU Band, orchestra and choir invitational.	12 PSU Invitationals	13 PSU Invitationals	14	15
16	17 Spec Programs Week	18	19	20	21	22
23	24 First day of Spring Vacation.	25	26	27	28 Last Day of Spring Vacation	29
30	31					

SUN.	MONDAY	TUESDAY	WEDNESDAY	THURSDAY	FRIDAY	SAT.
		1	2	3 Scheduling for 4th grading period. Thespian conference at Ashland.	4 Thespians to Ashland.	5 Thespians to Ashland.
6	7	8	9	10 Choir Tour	11 End of third grading period. Choir Tour.	12 Choir Tour.
13	14 Start of fourth grading period.	15 Wa-Hi Community Music Day.	16 Wa-Hi Community Music Day.	17 State Speech Meet.	18 State Speech Meet Choir Tour	19 State Speech Meet. Choir Tour
20	21	22 Preview Day for next year.	23 Rose Festival Princess election.	24 Rose Festival Princess Announcement, 2:30 p.m.	25	26
27	28 Forecasting for 1975-76.	29	30	A P R I L		

SUN.	MONDAY	TUESDAY	WEDNESDAY	THURSDAY	FRIDAY	SAT.
				1	2	3
4	5	6	7	8 Spring Play Matinee.	9 Final Day for forecasting for 1975-76. Spring Play 8 p.m.	10 Spring Play 8 p.m.
11	12	13 Prep. concert 7:30 p.m.	14	15	16	17 N.W. Vocal Jazz Festival Mt. Hood C.C.
18	19	20	21 Spring Concert 7:30	22	23 Student Body Elections.	24 Sports Banquet 7:30 p.m.
25	26 Holiday Memorial Day. No school.	27 Senior Test Week	28	29	30 Senior Assembly Last day for seniors	31

SUN.	MONDAY	TUESDAY	WEDNESDAY	THURSDAY	FRIDAY	SAT.
1	2	3	4	5	6	7 Com mence ment  Civic Auditorium 2:00 p.m.
8	9 Test Week	10	11	12 Last day of school for stu- dents.	13	14
15	16 Last Day of school for teach- ers.	17	18	19	20	21
22	23	24	25	26	27 Last day for Classified Employees	28
29	30					



